

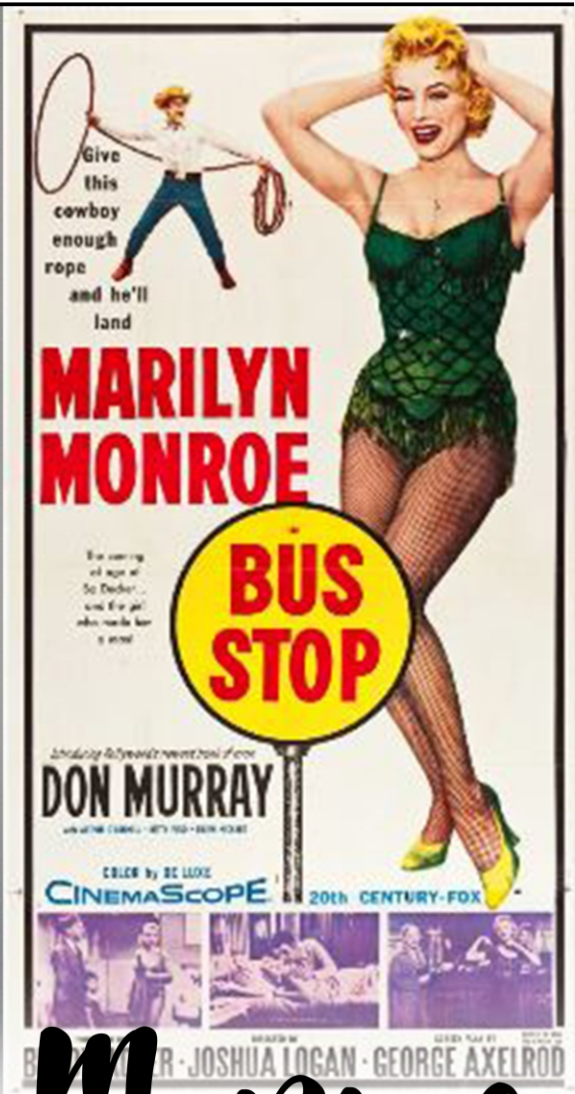
*Loose your mind. Find your soul.*

SOULMÄTTE

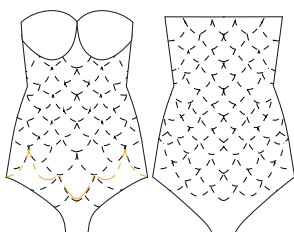
42	—————
40	.....
38	———
36	.....
34	.....

Bodysuit "Marilyn"

0060

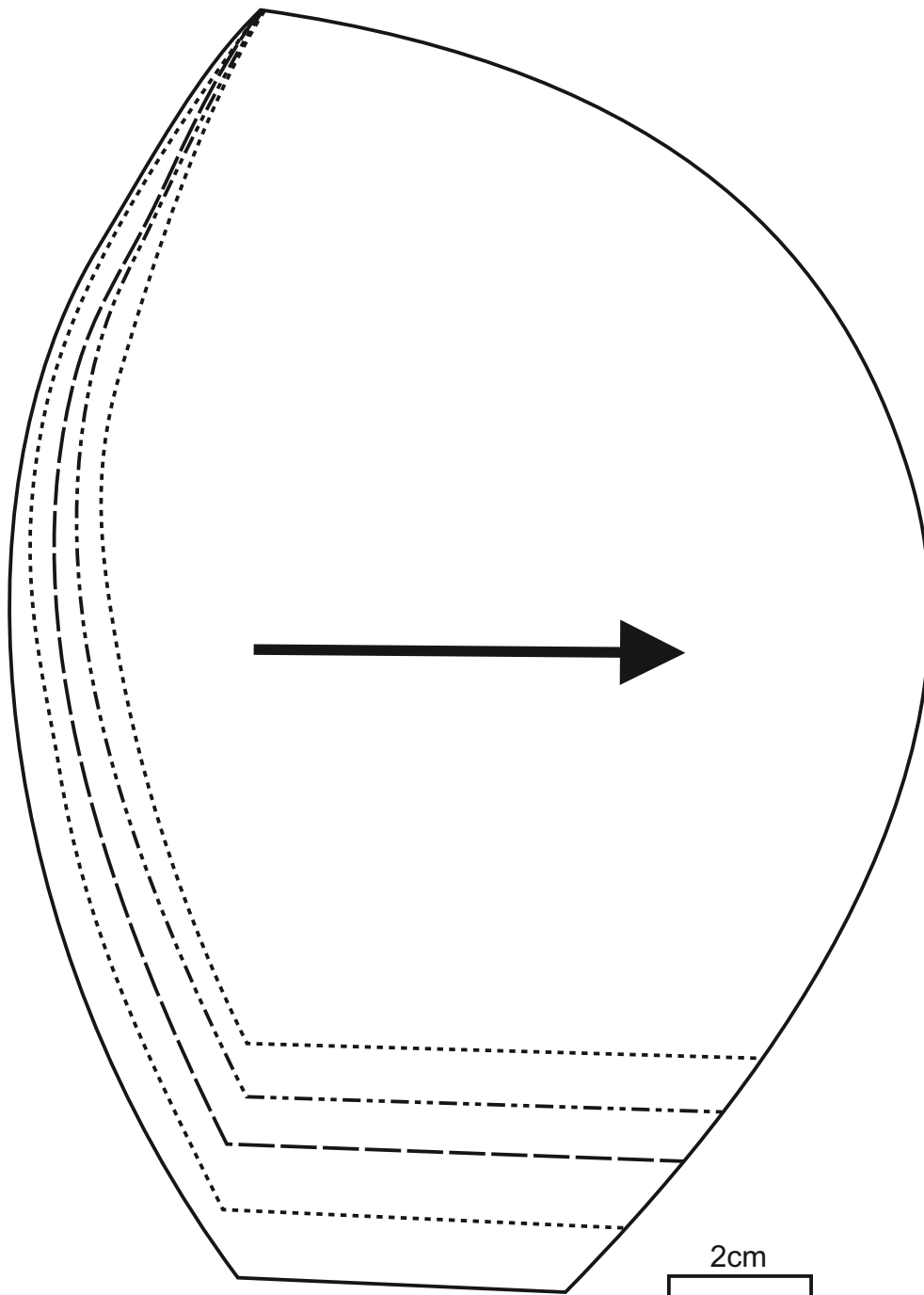


# Marilyn Monroe Inspired Leotard



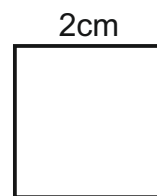
CM	XS	S	M	M/L	L
	34	36	38	40	42
BUST	80	84	88	92	96
WAIST	62	66	70	74	78
HIPS	86	90	94	98	102

INCH	XS	S	M	M/L	L
	34	36	38	40	42
BUST	31.4	33	34.6	36.2	37.7
WAIST	24.4	25.9	27.5	29.1	30.7
HIPS	33.8	35.4	37	38.5	40.1

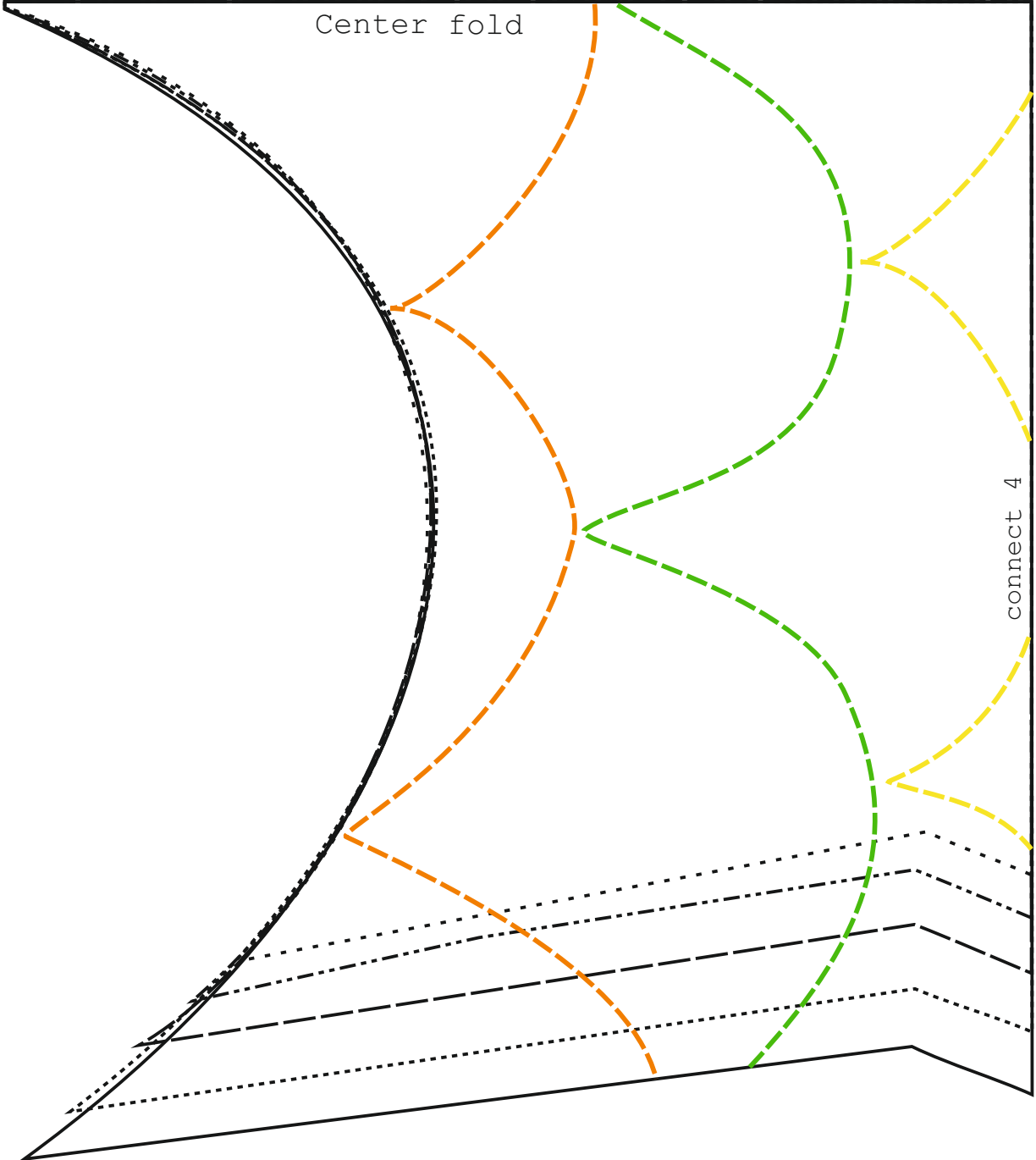


**Add seam allowance**

Suitable only for 4-ways stretchy fabrics. You will need **80cm (32inch)**. Cut and glue this pattern together with sticky tape. Made for regular A4 home printer. Choose "scale to fit" printer settings.



Example for correct printer settings: measure the cube before cutting the pattern.



Center fold

connect 4

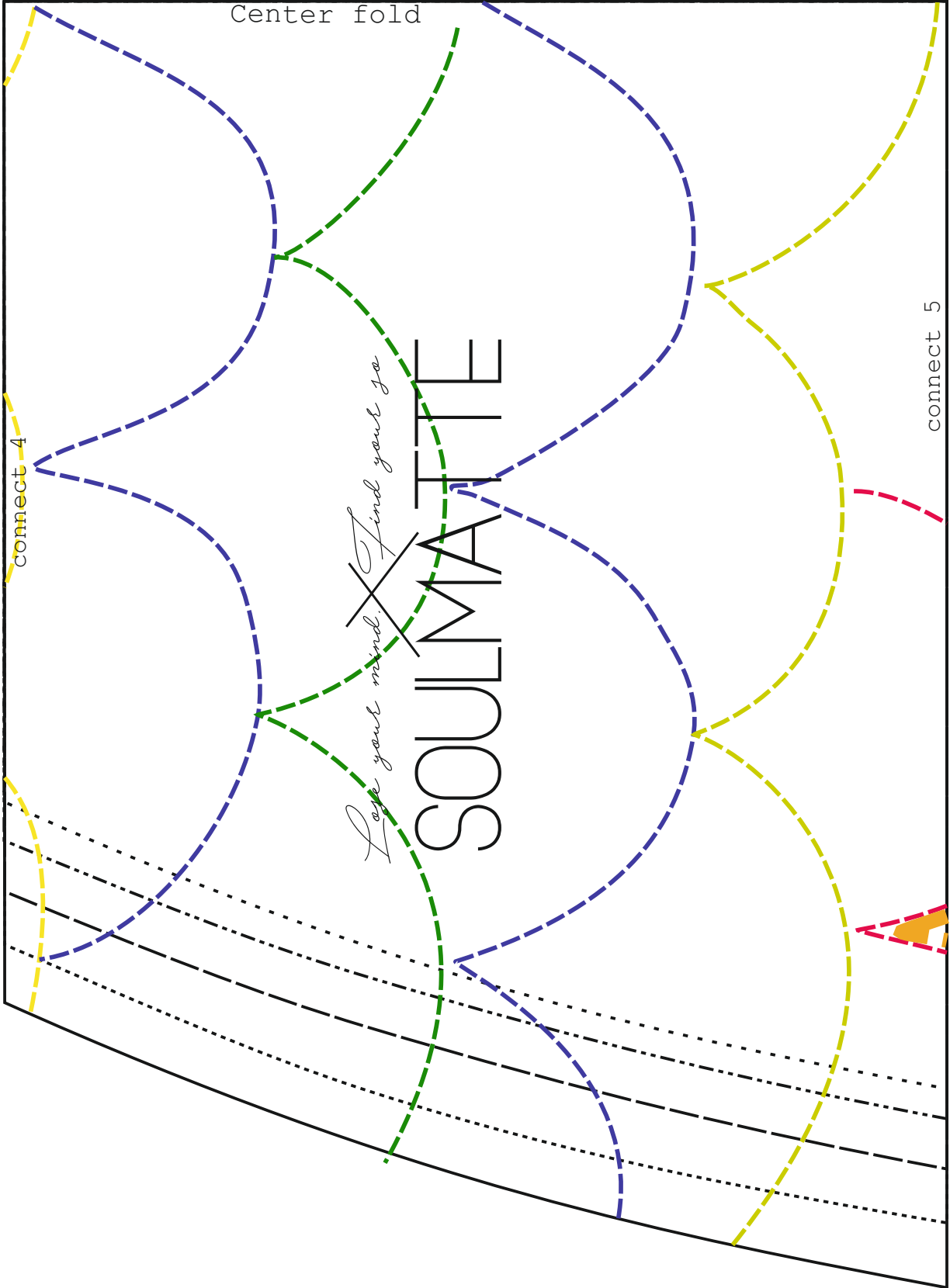
Center fold

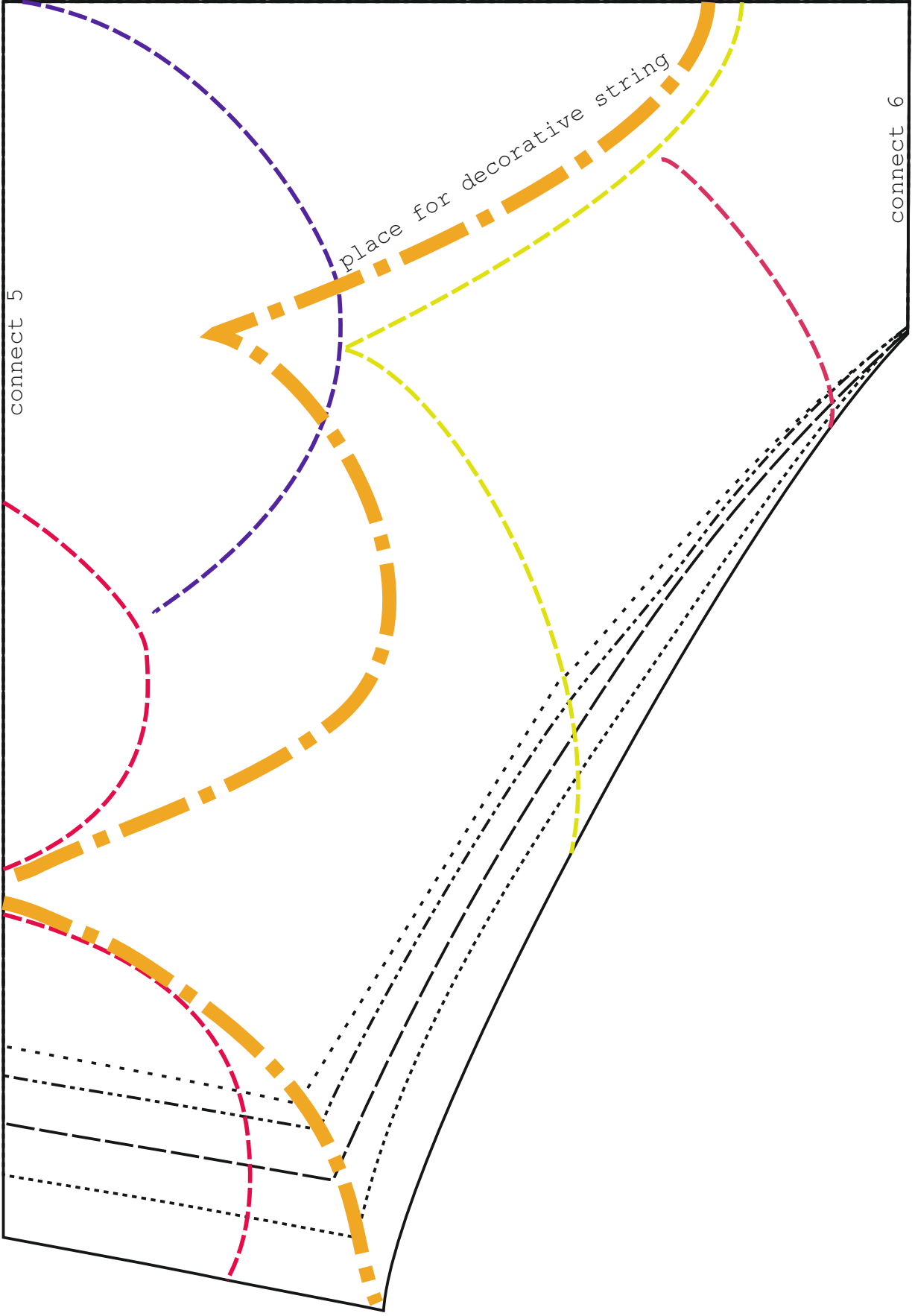
connect 4

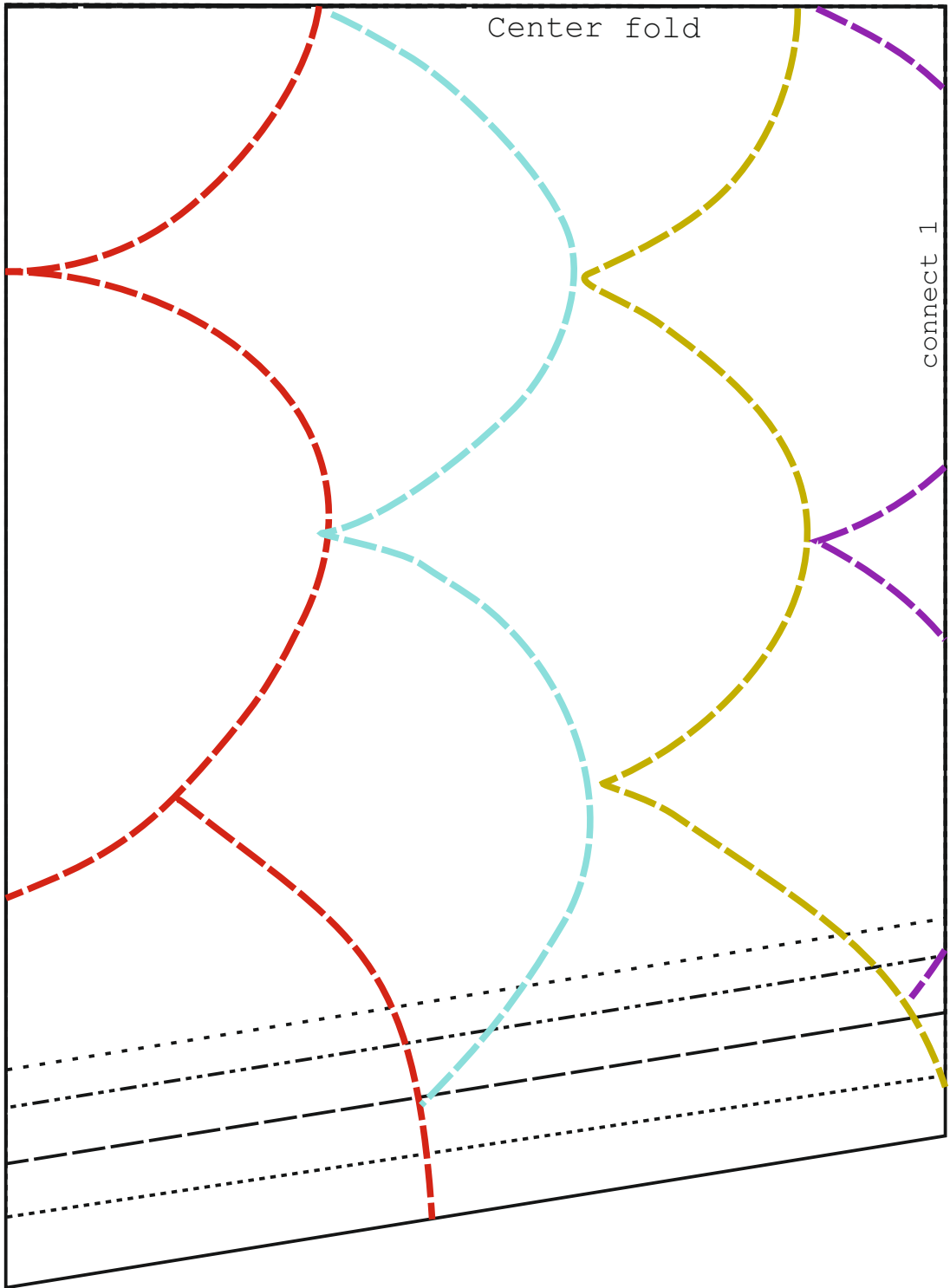
connect 5

*Let your mind find your joy*

# SOUJMATTIE

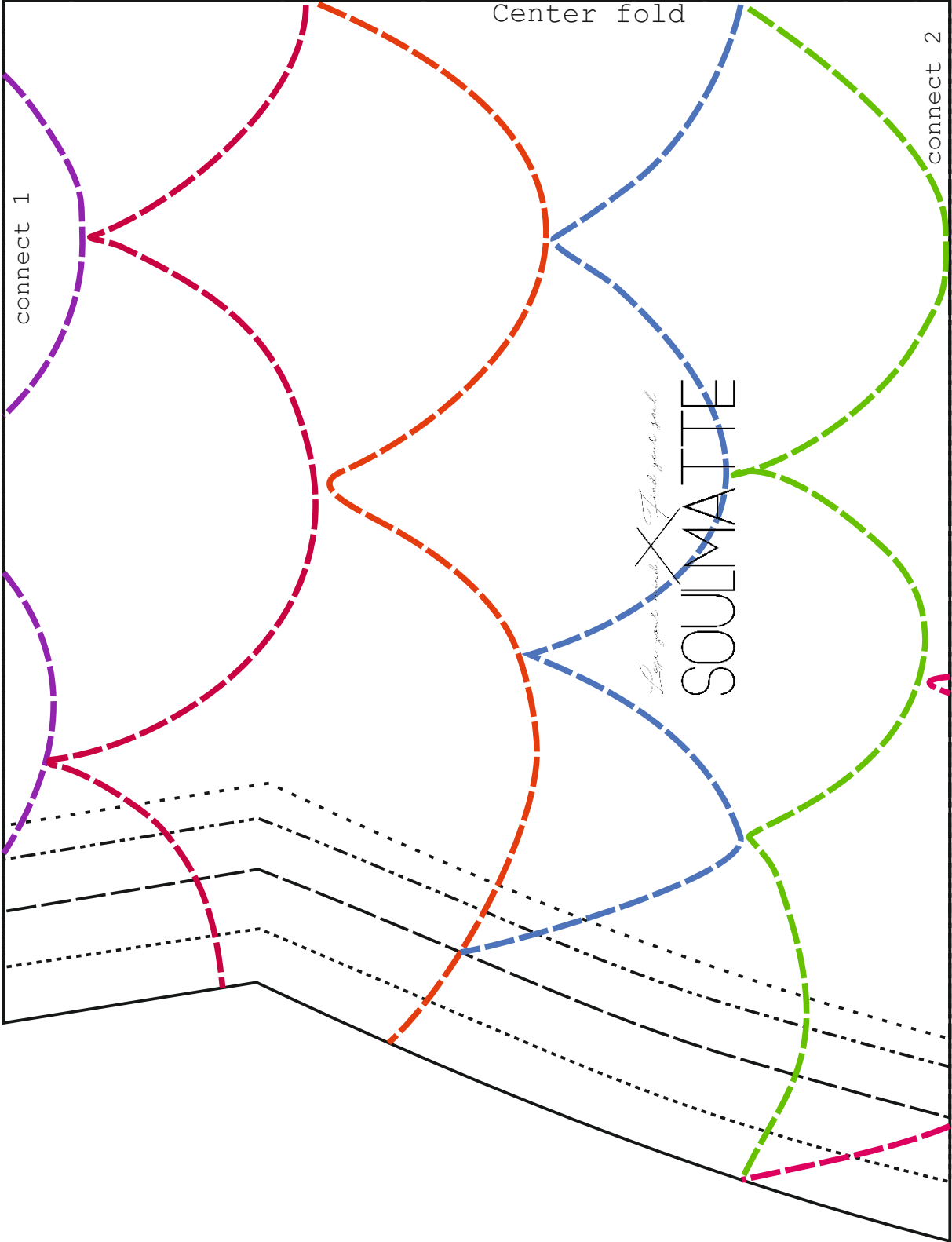






Center fold

connect 1



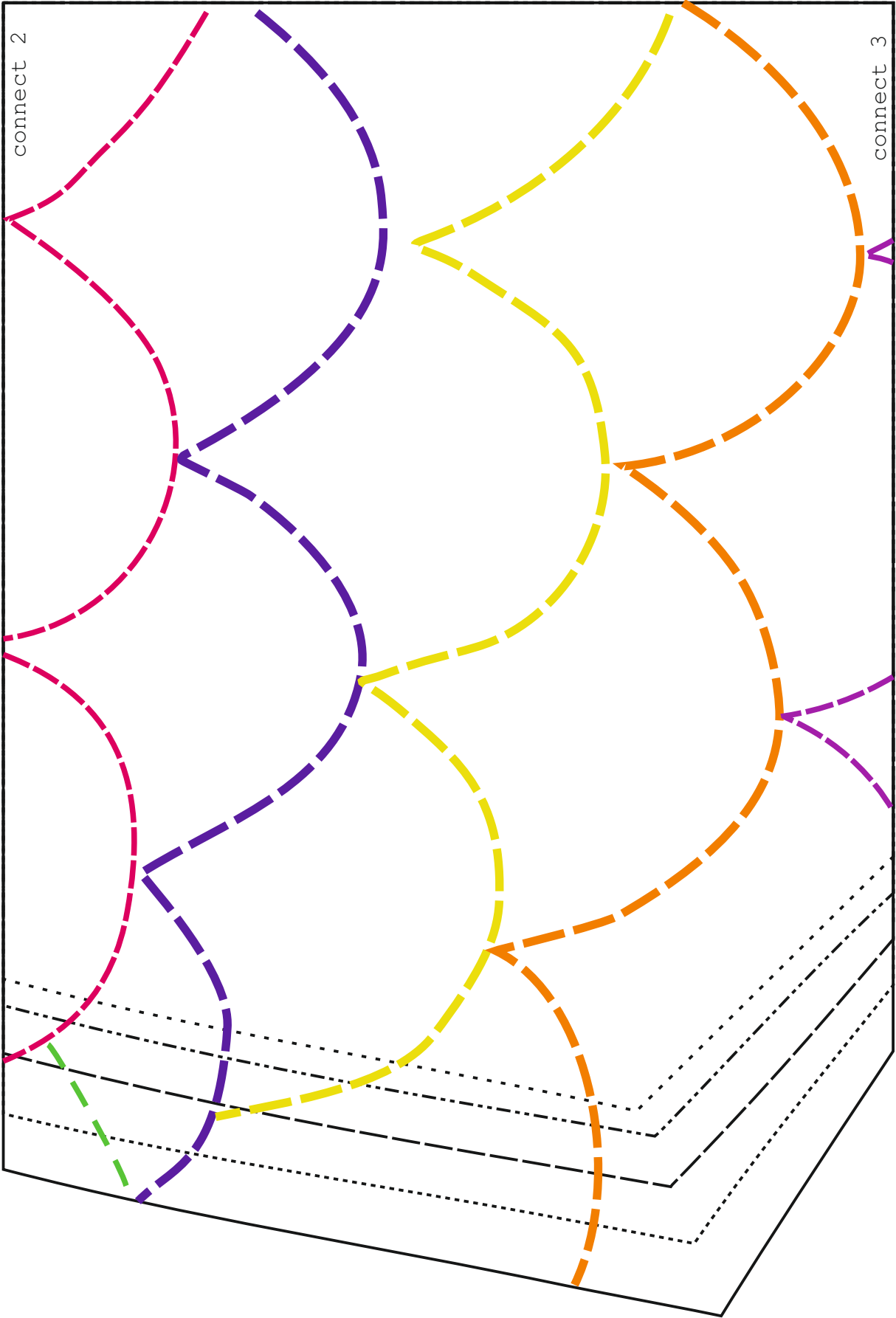
Center fold

connect 1

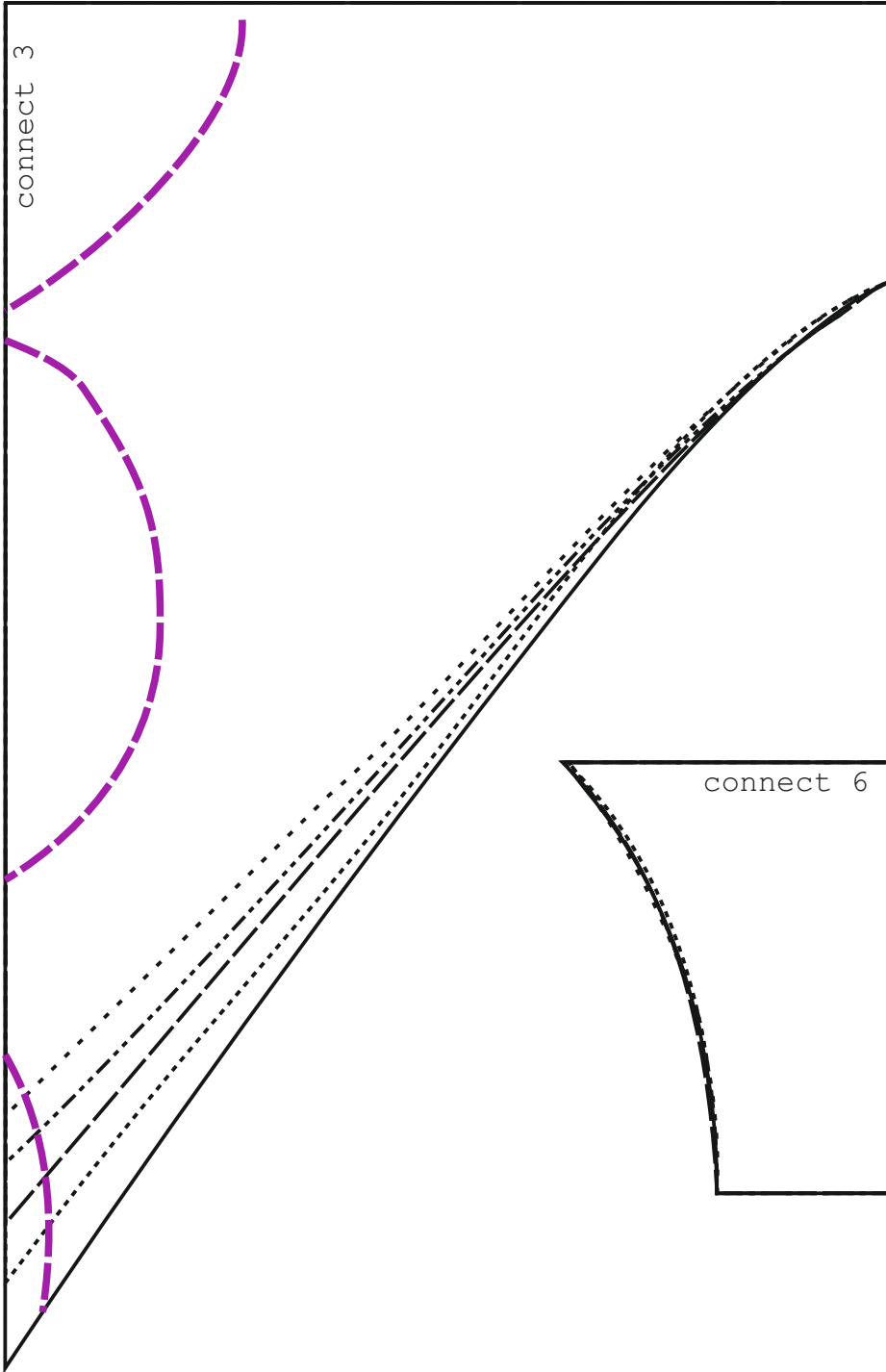
connect 2

*Love your soul. Find your soul.*

SoulMATE







**Inspiration:** Marlyn Monroe costume from American romantic comedy "The bus stop" (1956).

I'm not trying to create an exact replica of this costume. I do this project for my own interest, so I think that's why I can make it, how I like it :)

There is plenty of information about this actress life, so there is no need for me to introduce her. I think It's really easy to understand why I choose Her as an inspiration. In their first runs, Monroe's 23 movies grossed a total of more than \$200 million, and her fame surpassed that of any other entertainer of her time. Her early image as a dumb and seductive blonde gave way in later years to the tragic figure of a sensitive and insecure woman unable to escape the pressures of Hollywood. Her vulnerability and sensuousness combined with her needless death eventually raised her to the status of an American cultural icon.

## COSTUME

There are a few options of the leotard color - blue and green, in one poster even red. Also, the mesh fabric on the chest looks different in a few photos. But It's Just a small detail, which doesn't change a much for me, keeping in mind, that I still want to change some details.



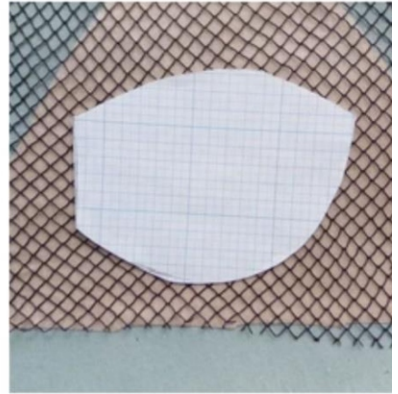
## FABRIC

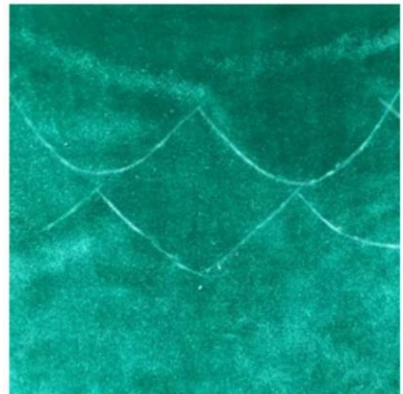
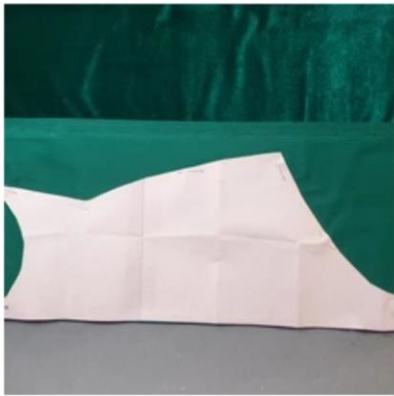
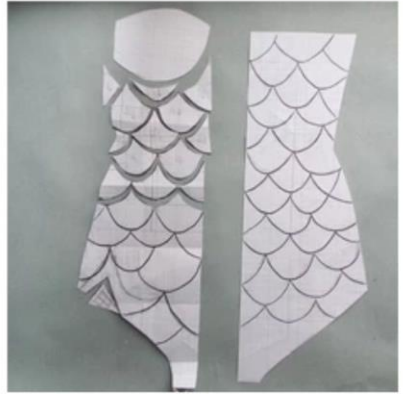
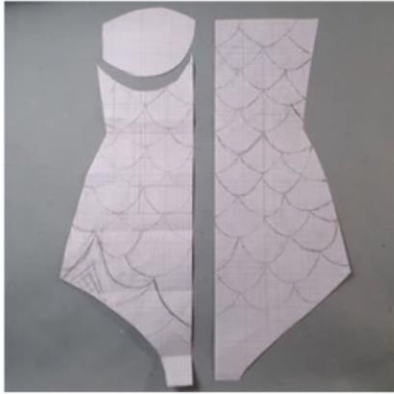
I bought 2 ways stretch emerald green color fabric and beige color fabric for bra cups and linen. I also bought fishnet fabric for chest decor. It looks really similar. In this one photo, there is a heart

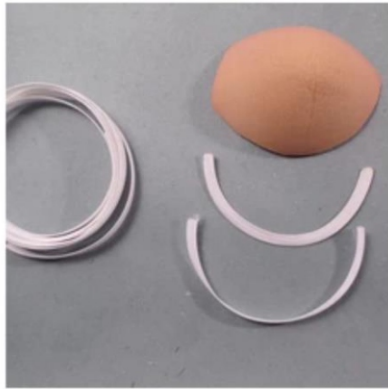
shape hand stitching on the chest. Could it be that it tore apart, and someone stitches it like that? In the photo taken from the exhibition, it also looks torn.



**CUT** I understand that this piece of clothing has sewed in corset boning, sew in bones, or maybe there is a corset underneath this suit. It shapes those amazing curves. It looks amazing, but also uncomfortable. So when I throw out the corset part from this clothing, I think I will be left with a simpler shape of the bodysuit. I used most padded bra cups that I found. I heard a roomer that Marilyn custom made here bras, and it was heavily padded.







This bodysuit is with soft stretchy beige color linen. I want to cover all the treads from the beading and the stitches from the tassels.

## MAKING BROOCHES FOR SIDES DECORATION

I found the mold on eBay for this, so I didn't have to make it. Well, obviously, it's not the same design, but I think it matches the spirit of this big vintage brooches. I made it in gold color.

I sprayed the brooches with golden spray, then when it dried out I applied two layers of golden lacquer.

To make these brooches it took 2 days because it takes at least half a day for all layers of paint, glue and resin to dry. I also fix six thick threads for each brooch, that I could sew it to the costume.

### SEWING

Almost all seams on this leotard are sewed with overlock super elastic stitch. All tassels are sewn on with the simple sewing machine using the settings for knitwear fabrics. Beading and brooches are sewed on by hand. The bra cups are inserted between the main and linen details of fabric, and it is fixed to the linen. I didn't use straps regulators in this design, because the straps string was too thick and decorative so it wouldn't look good. This design isn't difficult to sew, but it needs a bit of time and patience to sew on the beads.



From the scene in this movie which I saw, It looked that the actor had a really dramatic role. In on scene, she was arguing with a guy, and when she turned around and try to leave from him, he tries to stopped her by grabbing on to the tale of this costume, and ripped it off! She got really mad, after that:) Almost all of the time when I ripped my closes was when I was walking kind of fast and my clothes stuck to a door handle. What i mean to say is that this costume had a long beautiful tale. With a train, It looked even more interesting and out of these tames.

When I looked at photos for inspiration what to sew for this project, I found a lot of interesting costumes where there is a beautifully decorated bra with harem style skirts. It also looks really gorgeous, and I hope to try sewing something like that in the future. I found more than a few amazing Marilyn Monroe pictures with a swimming suit, but this one costume, that I choose to make definitely looks most interesting for me.

It would be interesting to look at how much of the difference it would make if I put the corset under this leotard. Sadly, I don't have one.

This really reminds me of the burlesque costumes. I think it's because of the tassels. The real costume design is a bit different from what is to show on the movie poster. On the poster, all the suit is green including bra cups. This mind also looked nice to me, or even better, but somehow, I decided to stick to the original picture. All other costumes which I will do will be in the black and white pictures, so in this one time when I can see the true color, I think I will stick to it.

