

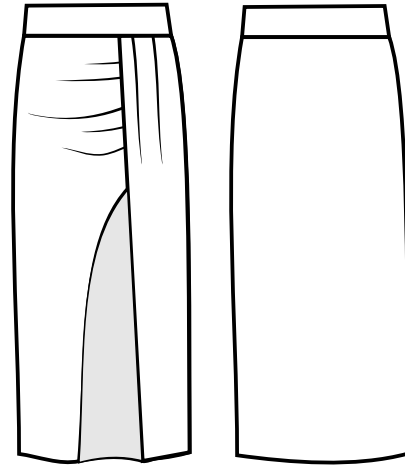
Lose your mind. Find your soul.

SOULMATTER

44	---
42	---
40
38	---
36

Long skirt with split. Skirt length 97cm

0103



Add +1cm seam allowance.

Suitable for 2ways stretchy fabric (lycra, spandex). You will need 1.3 meters (1.53yd) of fabric.

Cut and glue this pattern together with sticky tape. Made for regular A4 home printer. Choose "scale to fit" printer settings. For more sewing tips please visit

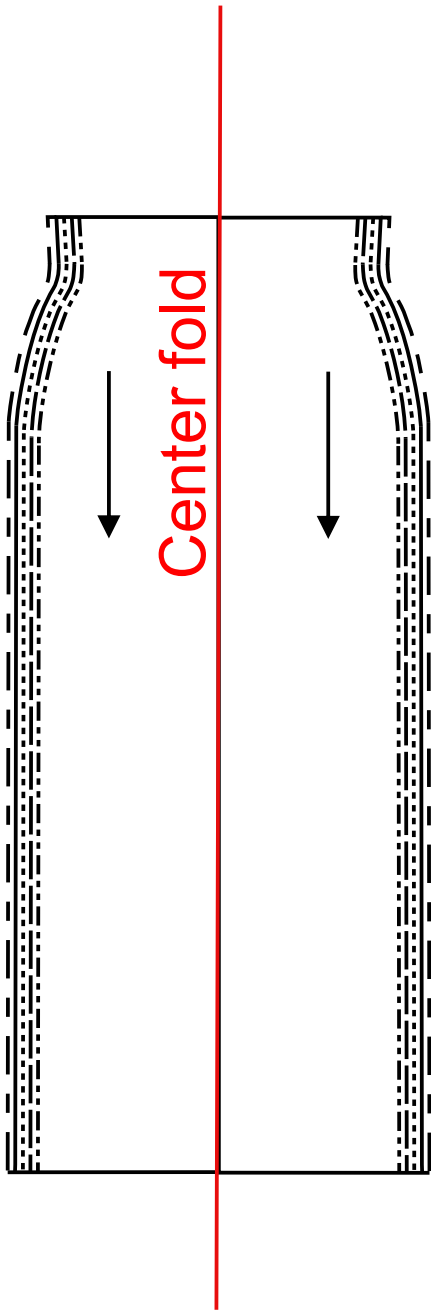
"Soulmatte" Youtube channel.

INCH	M	M/L	L	L/XL
BUST	34.6	36.2	37.7	39.3
WAIST	27.5	29.1	30.7	32.3
HIPS	37	38.5	40.1	41.7

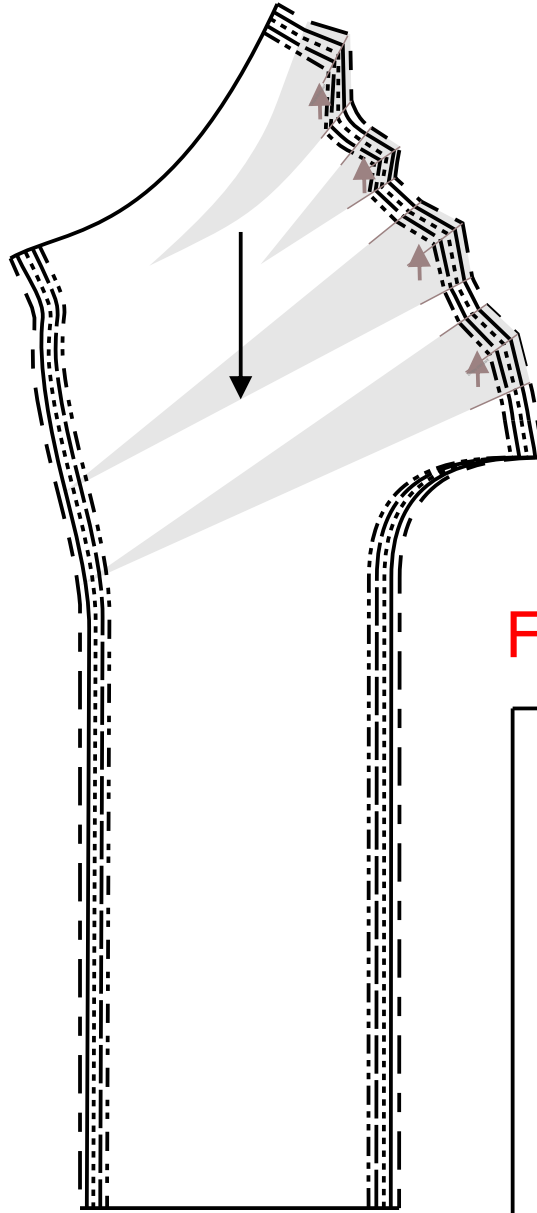
CM	M	M/L	L	L/XL
BUST	88	92	96	100
WAIST	70	74	78	82
HIPS	94	98	102	106

Sewing pattern - Andora skirt

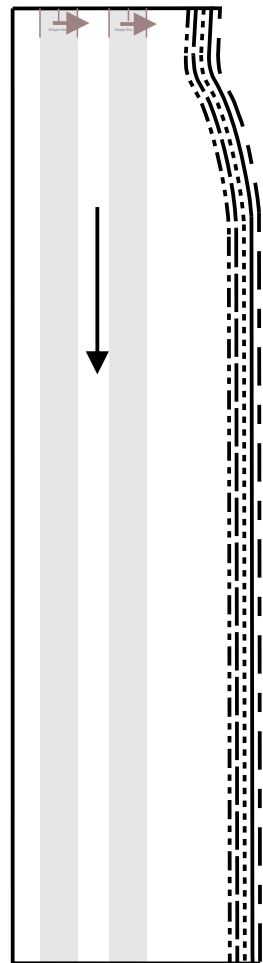
Back x1

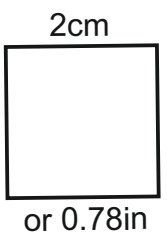
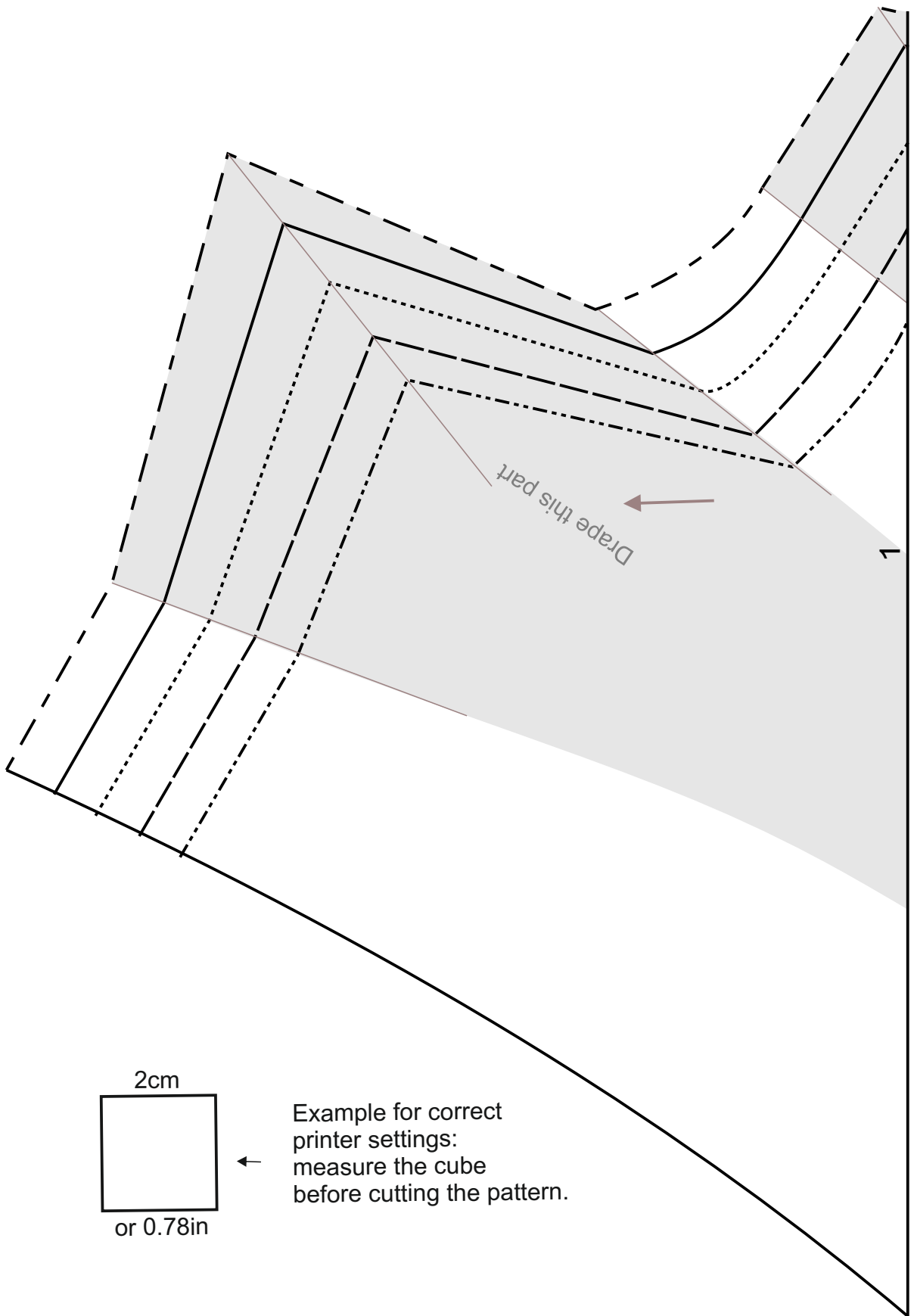


Front

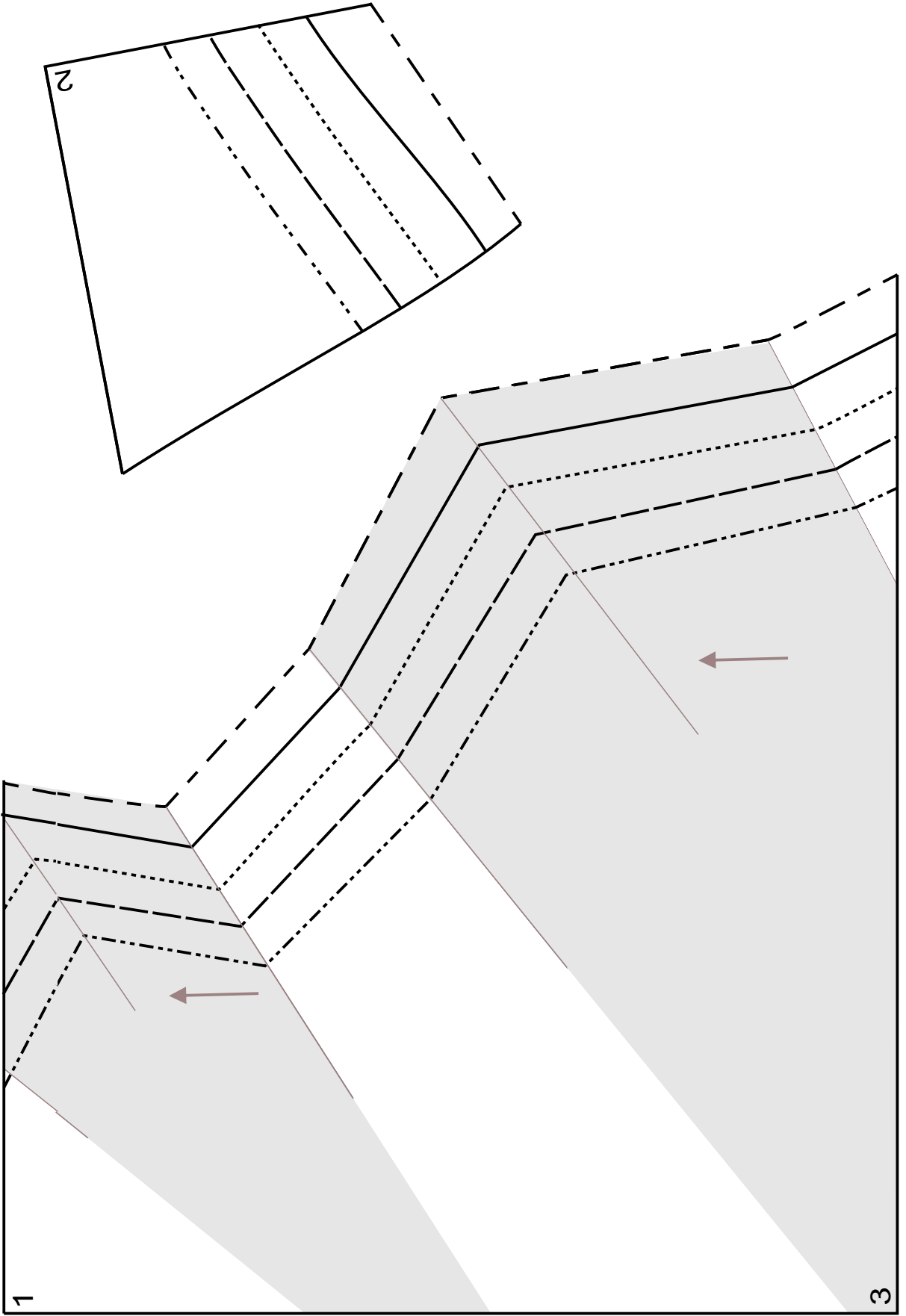


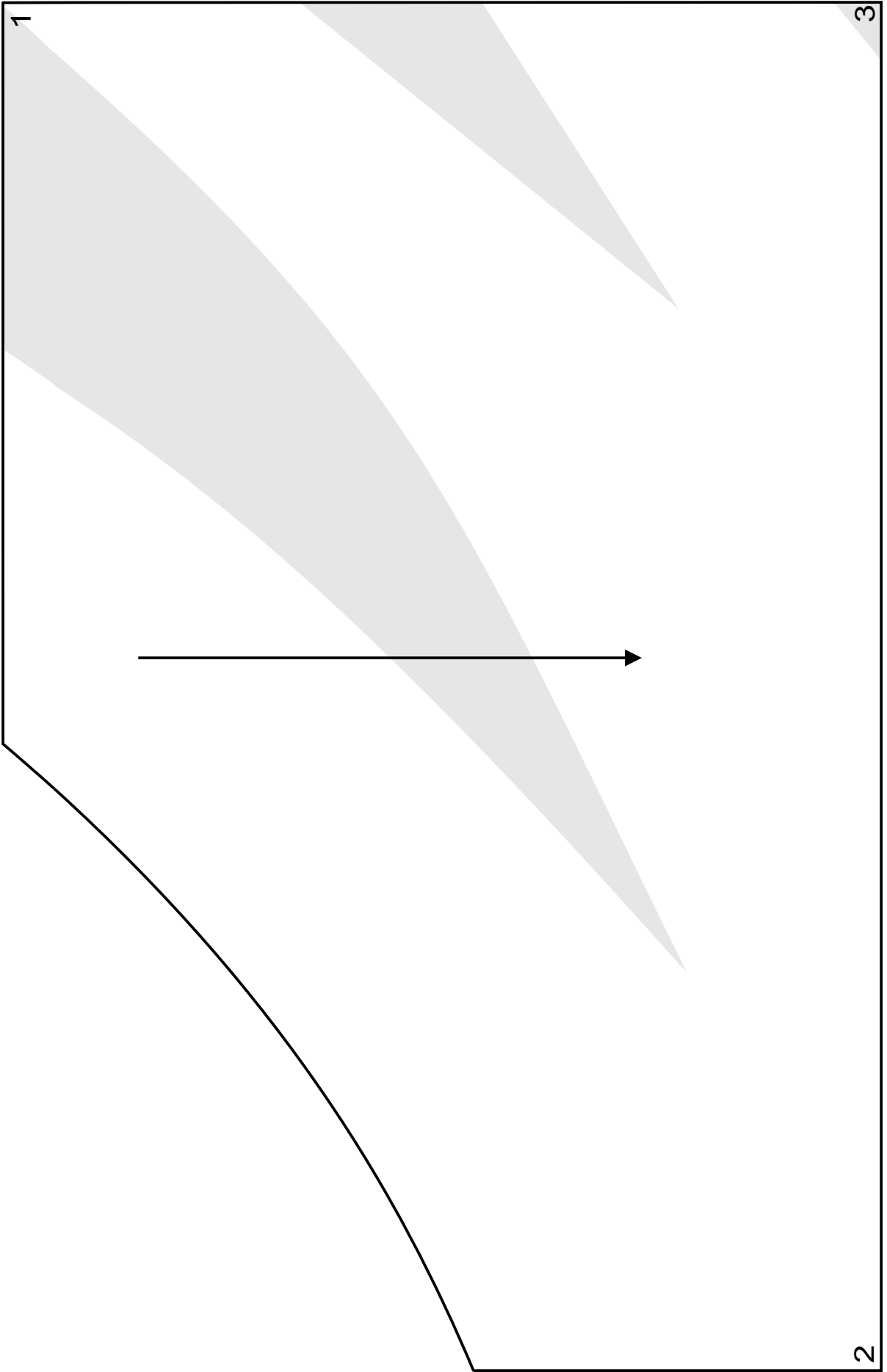
Front x1

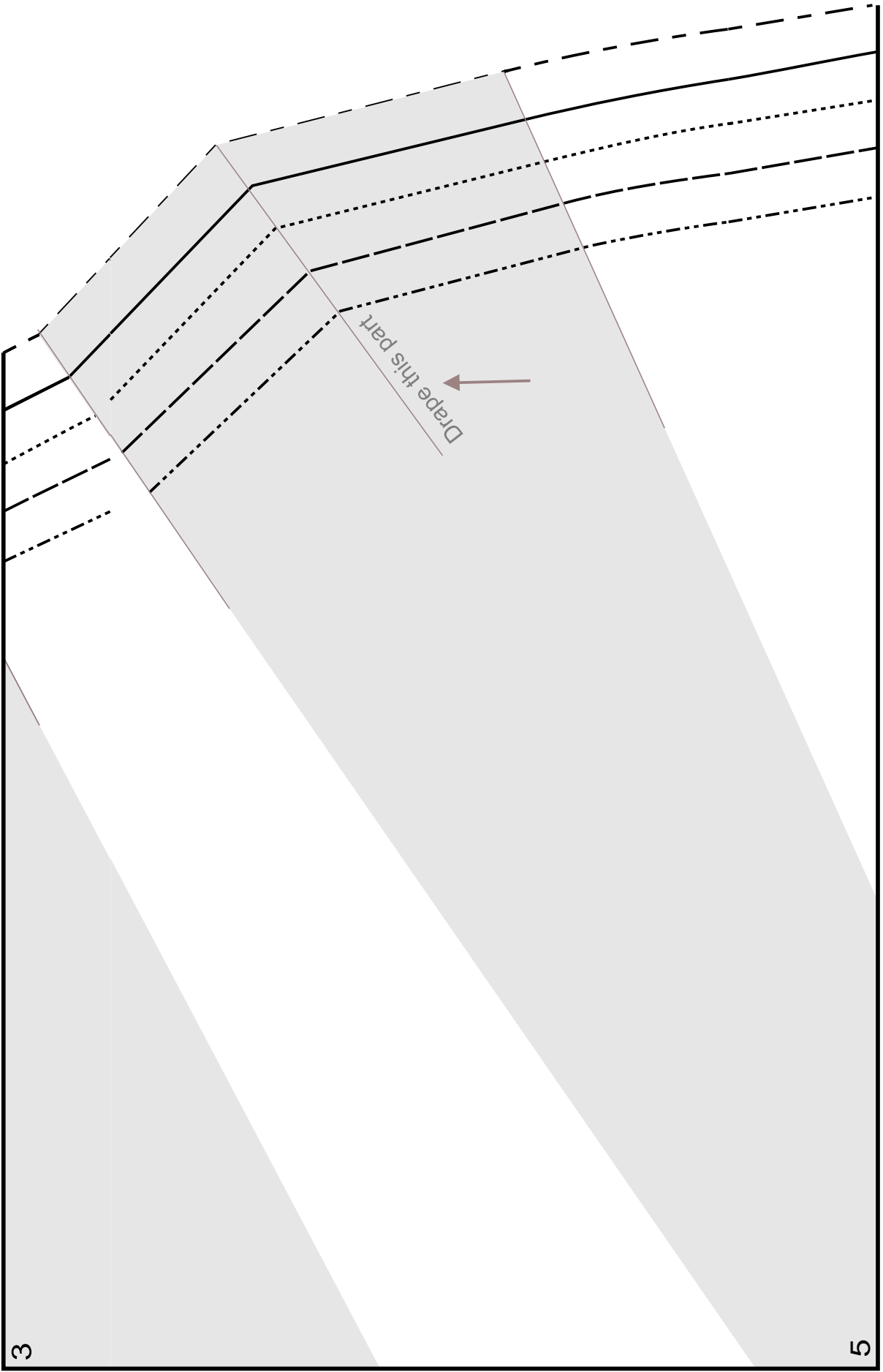


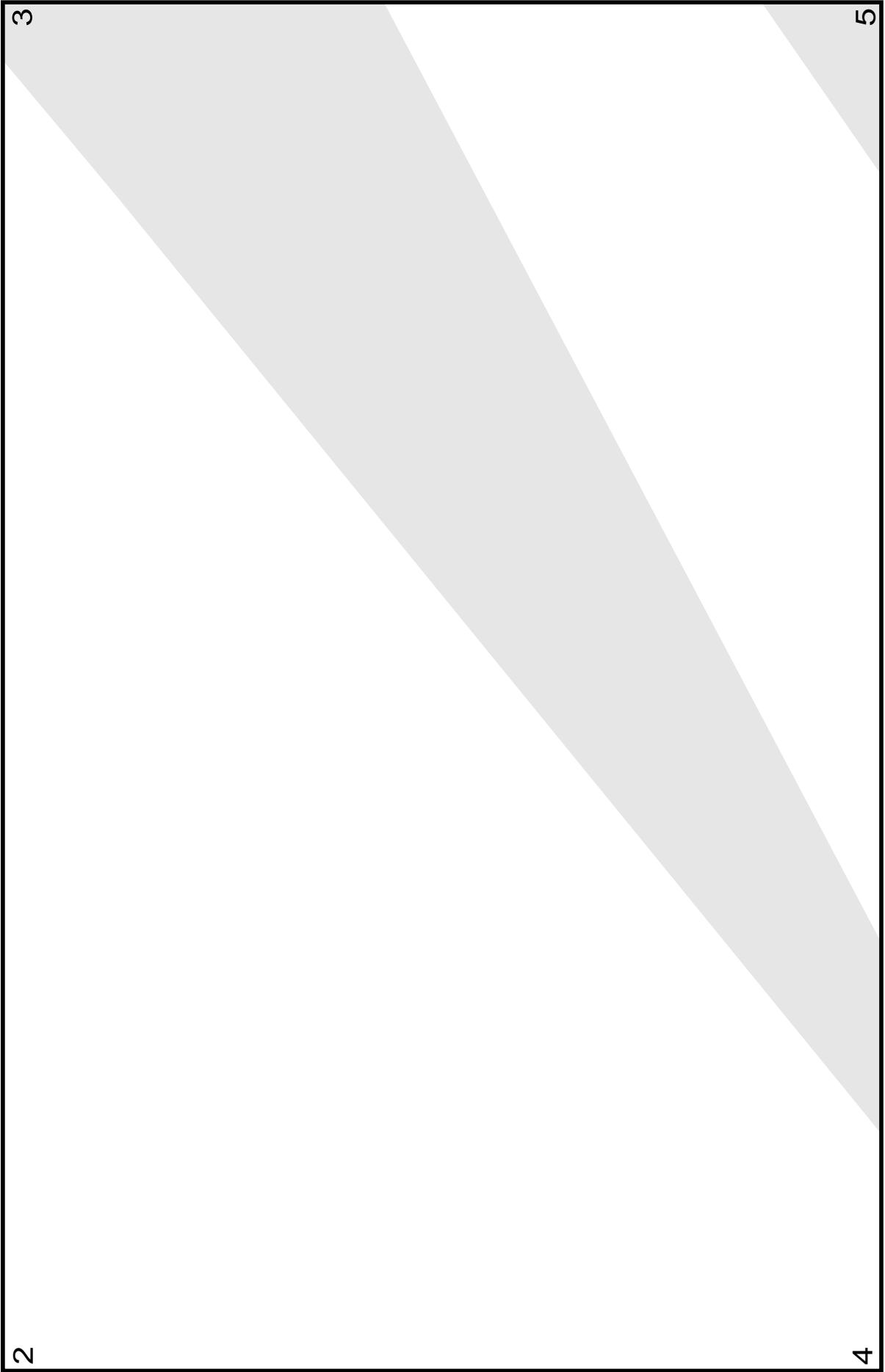


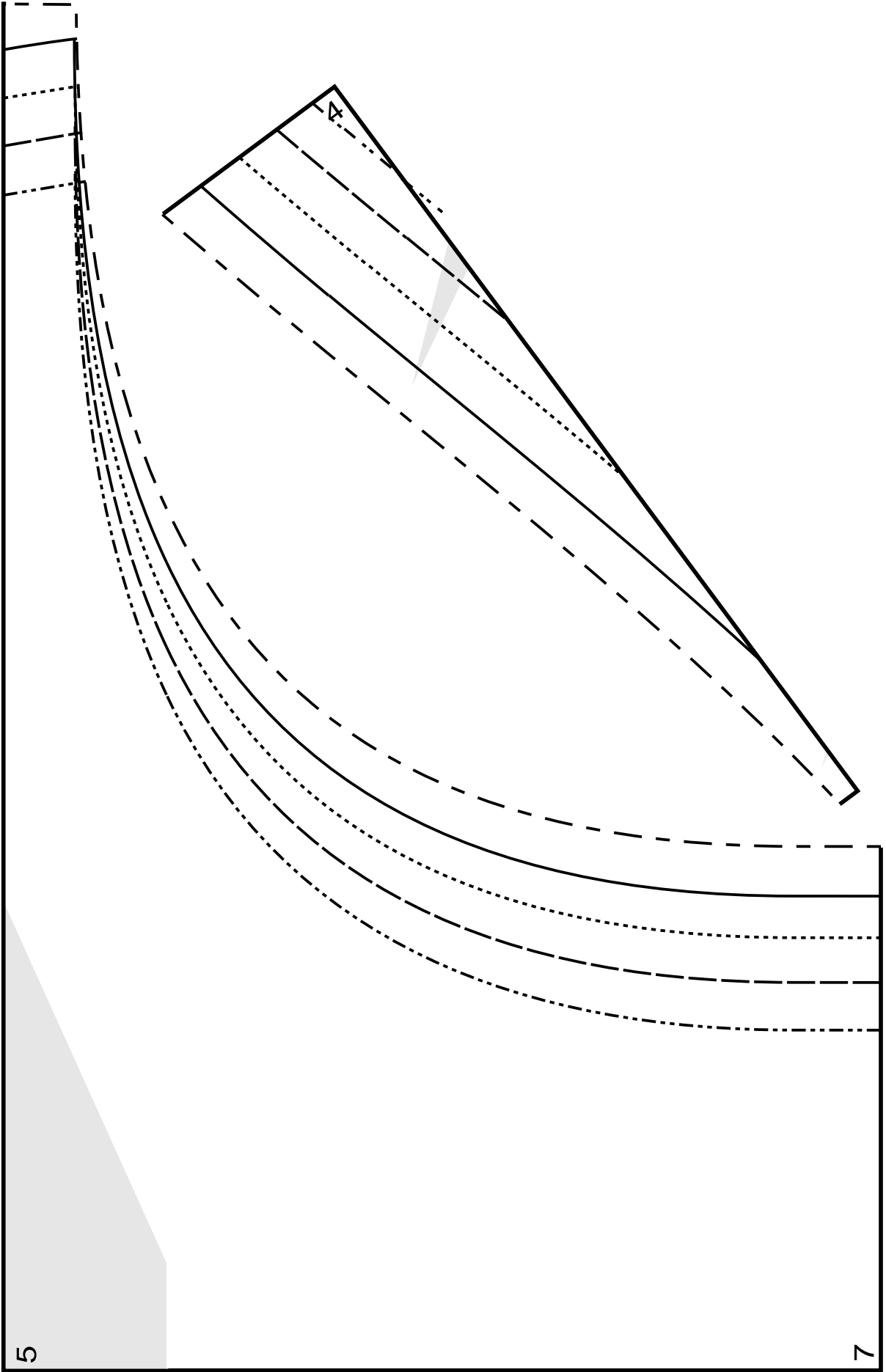
Example for correct printer settings: measure the cube before cutting the pattern.

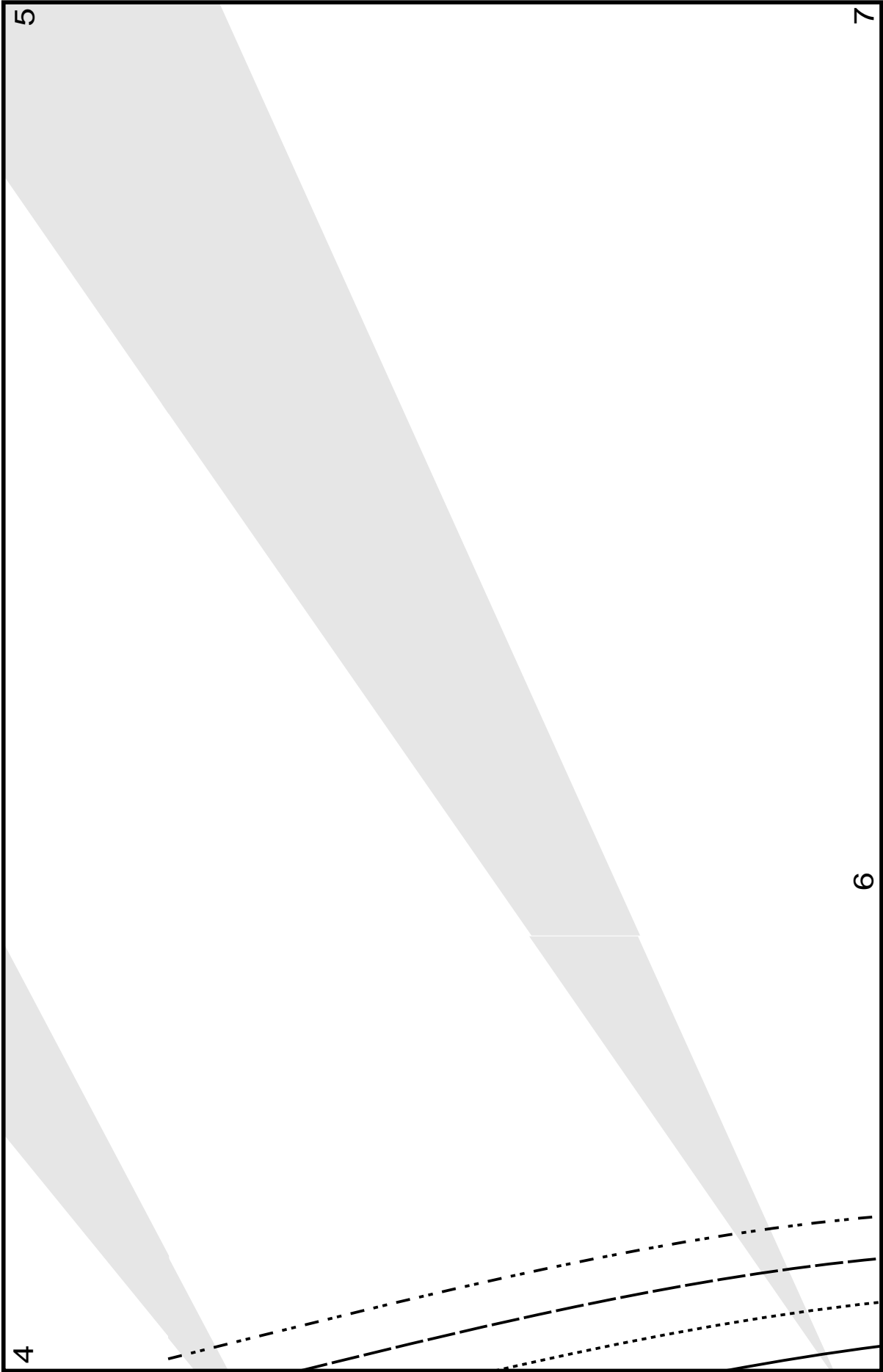


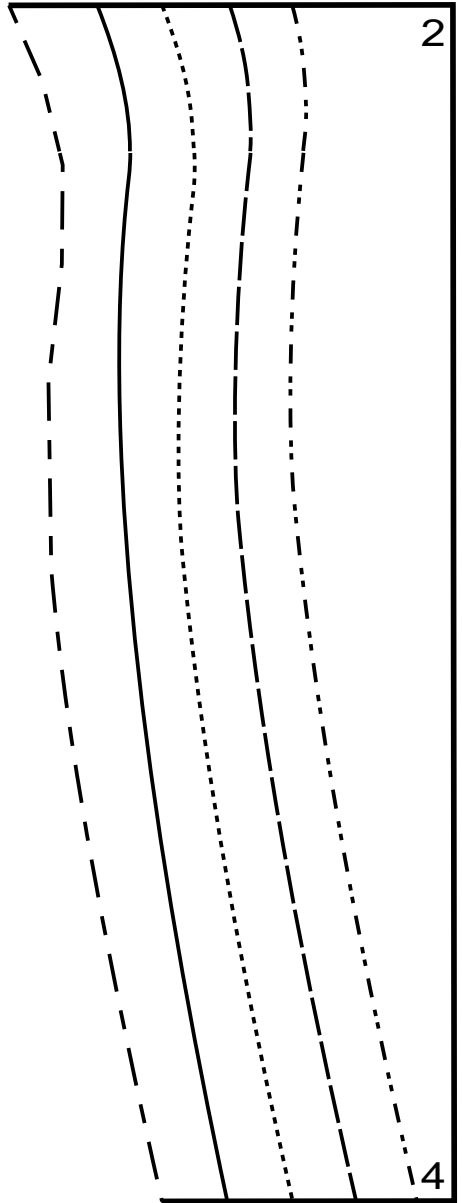
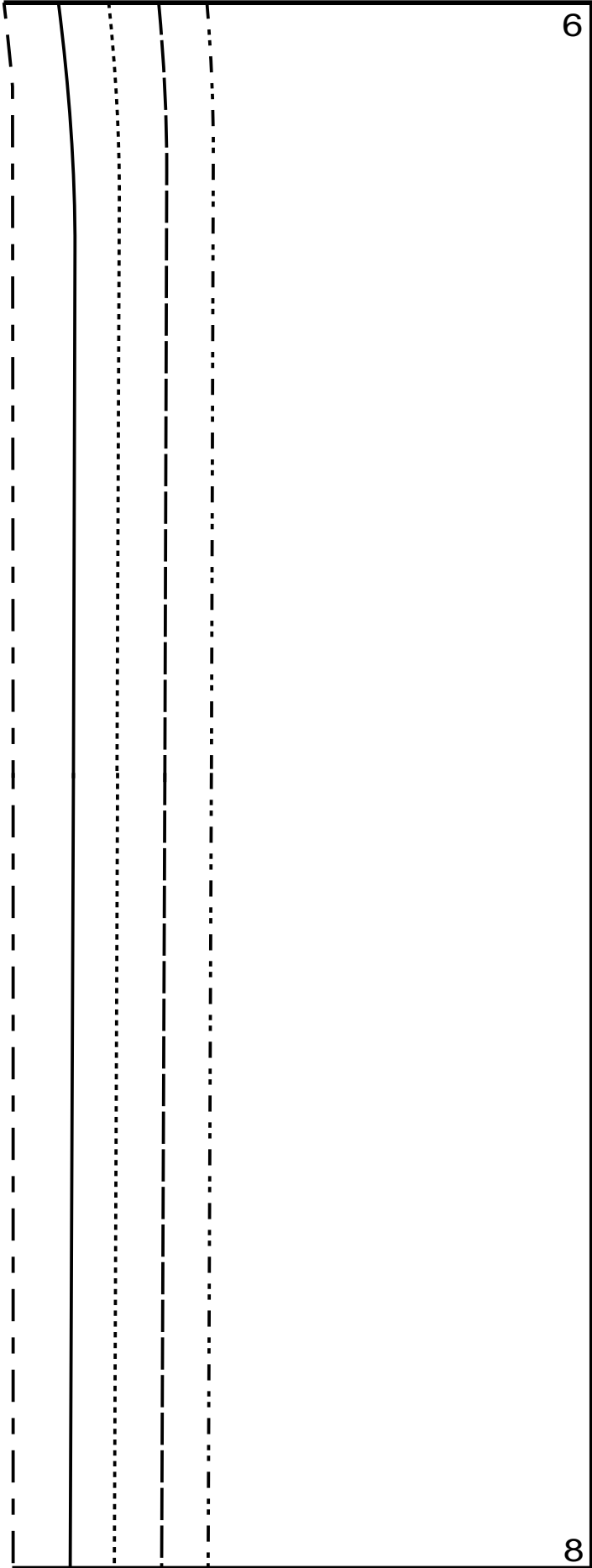












7				
9				

6

7

8

9

<p>8</p>	<p>10</p>			
----------	-----------	--	--	--

8

9

10

11

9

11



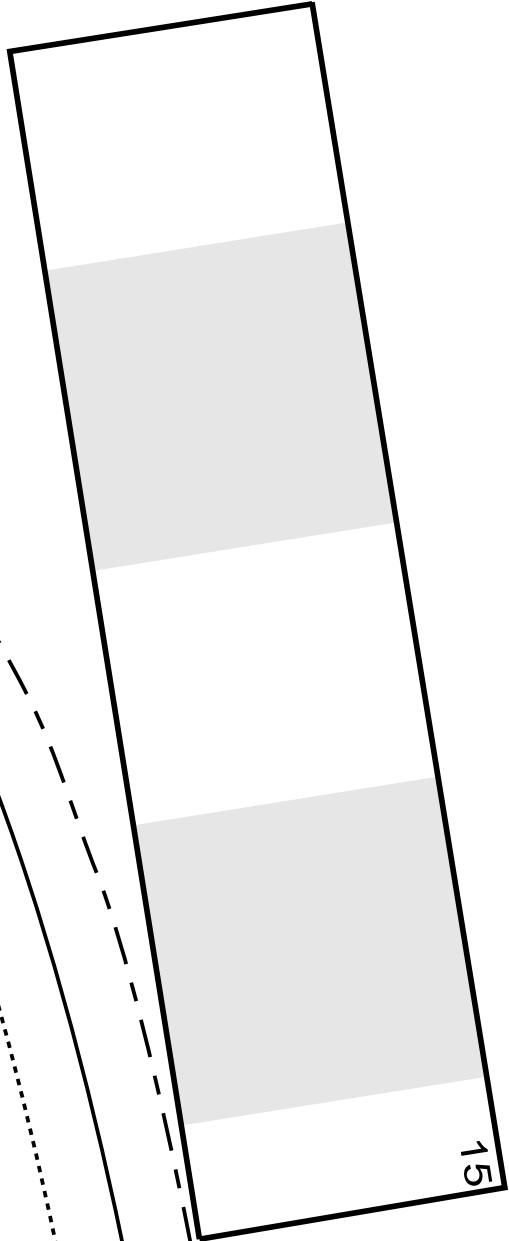
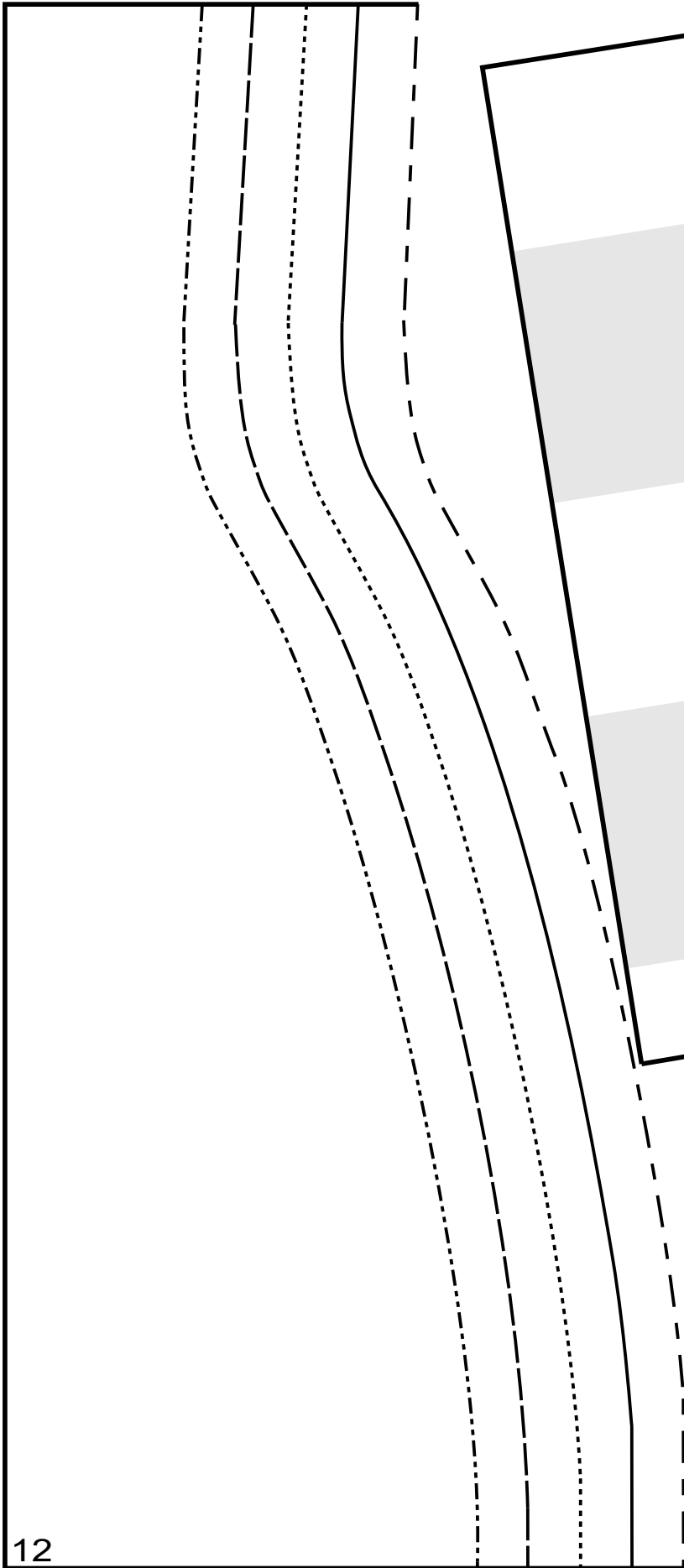
A vertical rectangular strip is shown, shaded in light gray. A thin vertical line runs down the center of the strip. At the top of the strip, a horizontal arrow points to the right, with the text "Drape this part" centered below it.

Drape this part



A vertical rectangular strip is shown, shaded in light gray. A thin vertical line runs down the center of the strip. At the top of the strip, a horizontal arrow points to the right, with the text "Drape this part" centered below it.

Drape this part





12

13

13

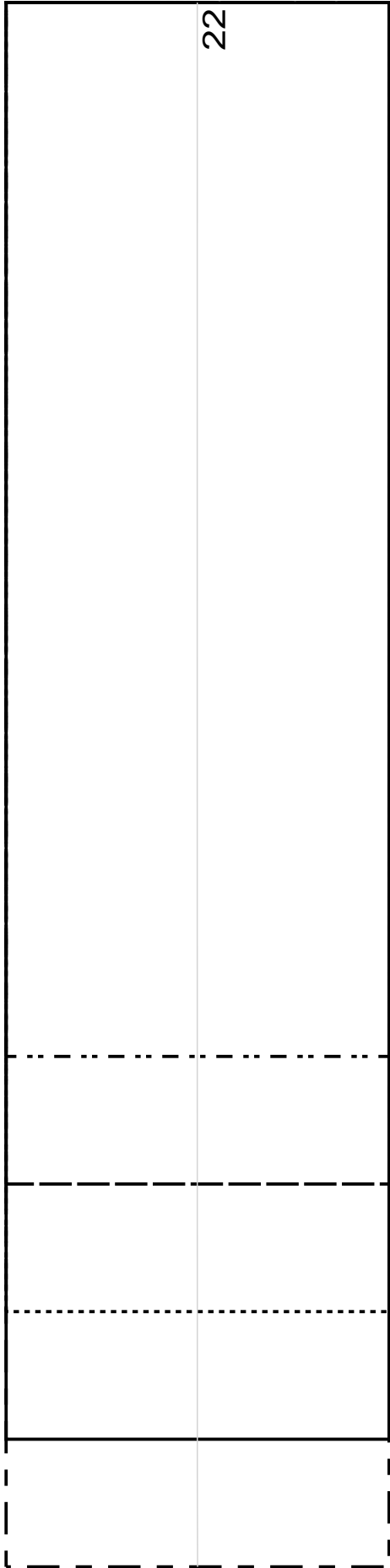
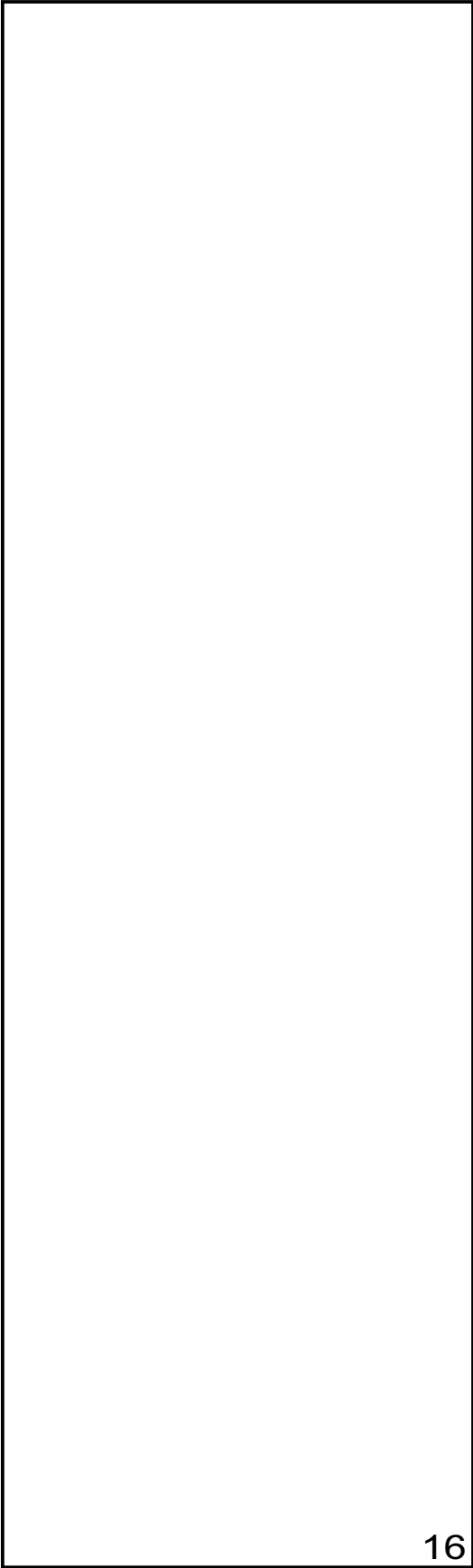
14

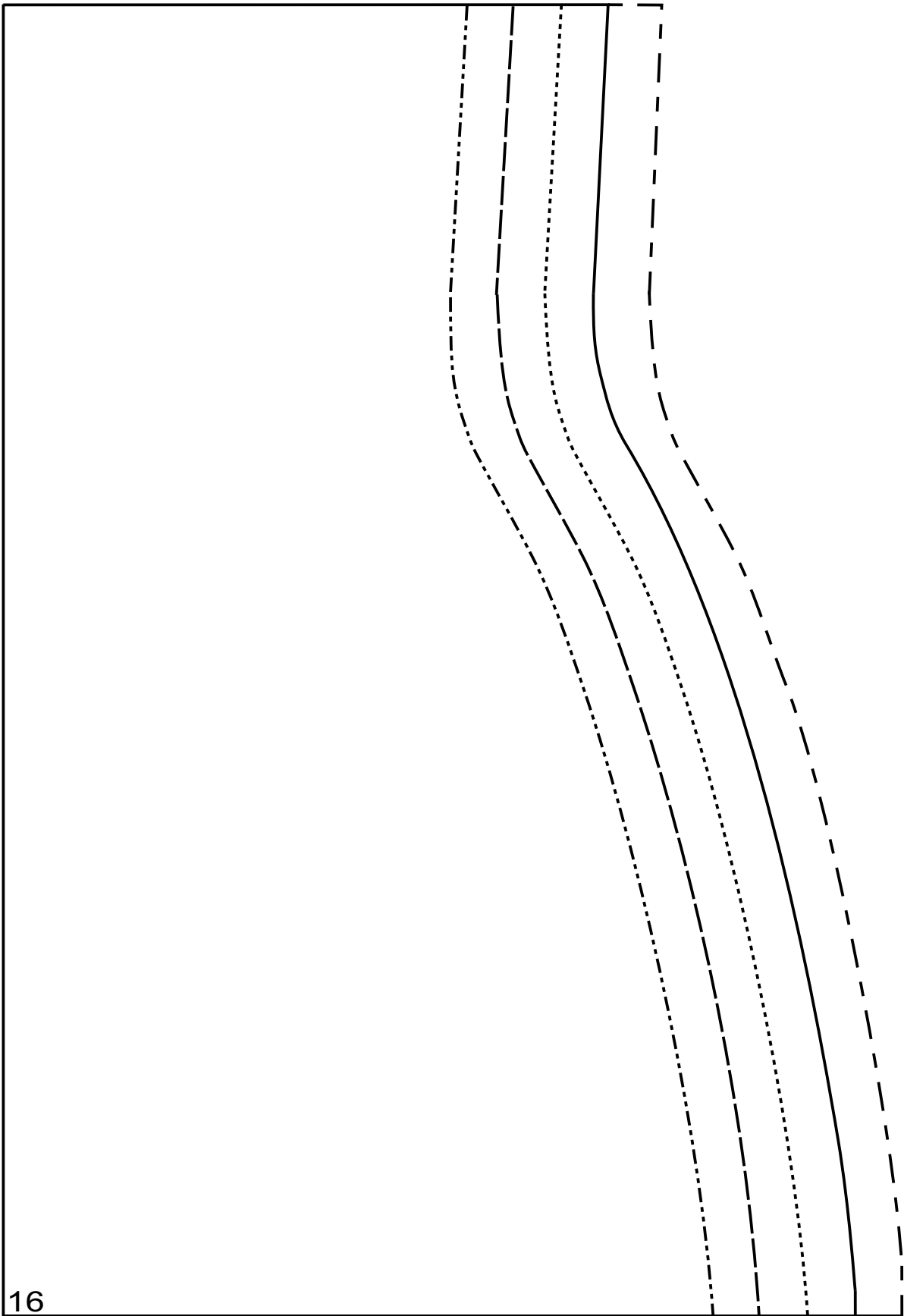
14

15

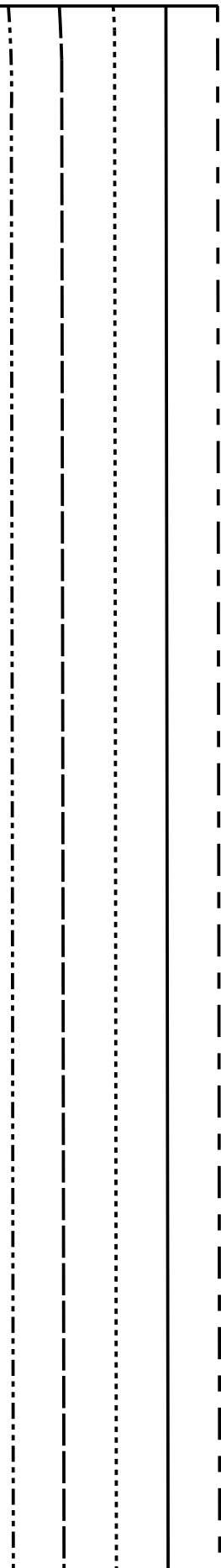
15

--	--	--	--	--





16



17

17

18

16

17

17

18

18

19

