

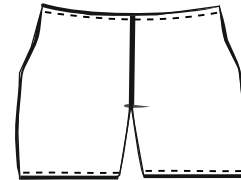
Loose your mind. Find your soul.

SOULMATTER

44	—————
42
40	-----
38	—————
36

Basic shorts

0136



Add seam allowance +1cm

Suitable only for 2-ways stretchy fabrics.
You will need **40cm(16inch)** of fabric.

Cut and glue this pattern together with sticky tape. Made for regular A4 home printer. Choose "scale to fit" printer settings.

For more sewing tips visit [Soulmatte Youtube channel](#).

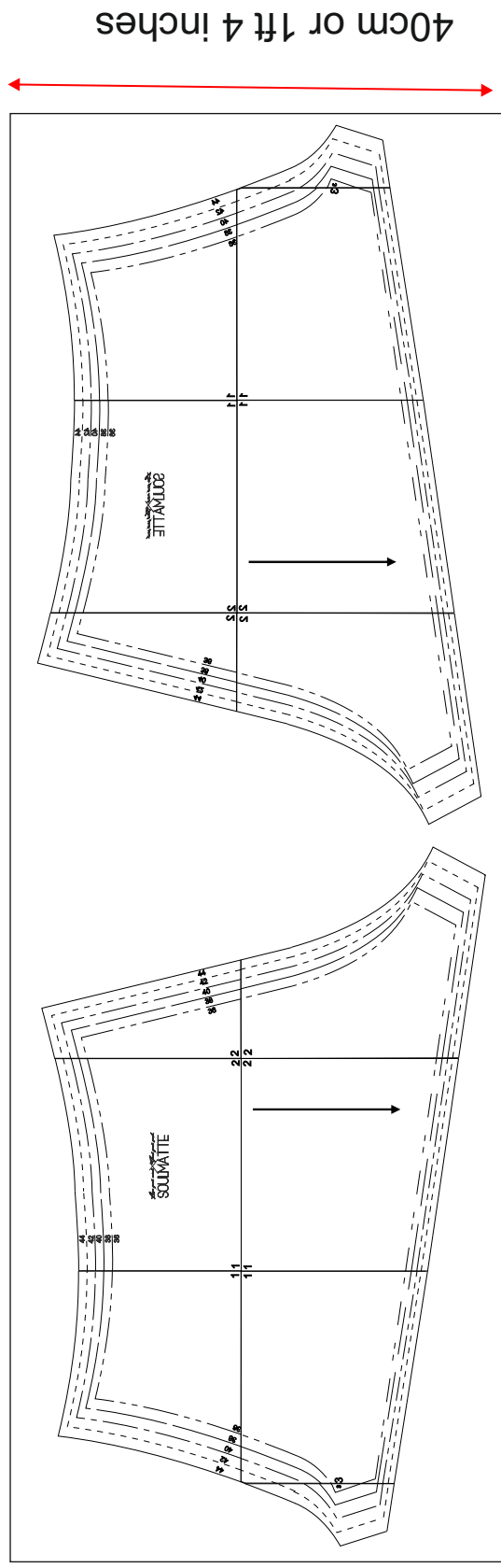
INCH	XS	S	M	M/L	L
	34	36	38	40	42
BUST	31.4	33	34.6	36.2	37.7
WAIST	24.4	25.9	27.5	29.1	30.7
HIPS	33.8	35.4	37	38.5	40.1

CM	XS	S	M	M/L	L
	34	36	38	40	42
BUST	80	84	88	92	96
WAIST	62	66	70	74	78
HIPS	86	90	94	98	102

Sewing pattern - Capri shorts

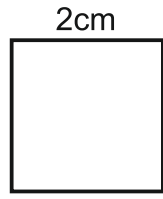
Cutting fabric

116cm or 3ft 10 inches



2

44	—————
42
40	- - - - -
38	—————
3	- - - - -



↑
Example for correct
printer settings:
measure the cube
before cutting the pattern.

